

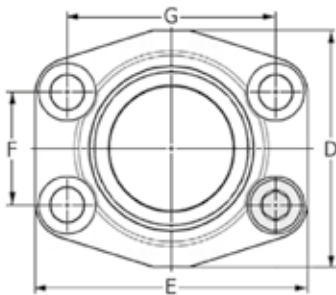
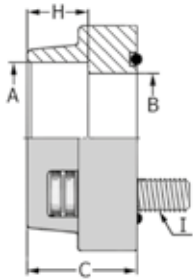
# BRIDES & COLLETS

## BRIDES DE FIXATION TARAUDÉES BSP

### SAE 3000



#### DONNÉES TECHNIQUES



Référence	DN	A	B	C	D	E	F	G	H	I
ABMFG30606	3/8"	3/8" GAZ	13	36	46	57	16.50	38.10	19	M8X30
ABMFG30808	1/2"	1/2" GAZ	13	36	46	57	17.48	38.10	19	M10X35
ABMFG30806	1/2"	3/8" GAZ	13	36	46	57	17.48	38.10	19	M10X35
ABMFG31212	3/4"	3/4" GAZ	19	36	50	65	22.23	47.63	19	M10X35
ABMFG31208	3/4"	1/2" GAZ	13	36	50	65	22.23	47.63	19	M10X35
ABMFG31616	1"	1" GAZ	25	36	55	70	26.19	52.37	22	M10X35
ABMFG31612	1"	3/4" GAZ	19	36	55	70	26.19	52.37	19	M10X40
ABMFG32020	1"1/4	1"1/4 GAZ	32	41	68	79	30.18	58.72	22	M10X40
ABMFG32016	1"1/4	1" GAZ	25	42	65	81	30.18	58.72	24	M10X45
ABMFG32424	1"1/2	1"1/2 GAZ	38	45	78	93	35.71	69.85	24	M12X45
ABMFG32420	1"1/2	1"1/4 GAZ	32	45	78	95	35.71	69.85	24	M12X45
ABMFG33232	2"	2" GAZ	51	45	90	102	42.88	77.77	30	M12X45
ABMFG33224	2"	1"1/2 GAZ	38	45	90	102	42.88	77.77	26	M12X45
ABMFG34040	2"1/2	2"1/2 GAZ	63	50	105	114	50.80	88.90	30	M12X45
ABMFG34032	2"1/2	2" GAZ	51	50	105	114	50.80	88.90	30	M12X45
ABMFG34848	3"	3" GAZ	73	50	124	134	61.93	106.38	34	M16X50
ABMFG34840	3"	2"1/2 GAZ	63	50	124	134	61.93	106.38	30	M16X50
ABMFG35656	3"1/2	3"1/2 GAZ	89	48	136	152	69.85	120.65	34	M16X50
ABMFG35648	3"1/2	3" GAZ	73	48	136	152	69.85	120.65	34	M16X50
ABMFG36464	4"	4" GAZ	99	48	146	162	77.77	130.18	34	M16X50
ABMFG36456	4"	3"1/2 GAZ	89	48	146	162	77.77	130.18	34	M16X50

#### PRODUITS SIMILAIRES

Dans cette famille existe également les brides en SAE 6000.

[www.isoflex.fr](http://www.isoflex.fr)

Tel : +33(0)2 41 39 98 98 - [contact@isoflex.fr](mailto:contact@isoflex.fr)

ANGERS (49) - LOUDEAC (22) - NANTES (44) - CAEN (14) - AVIGNON (84) - ORLÉANS (45)